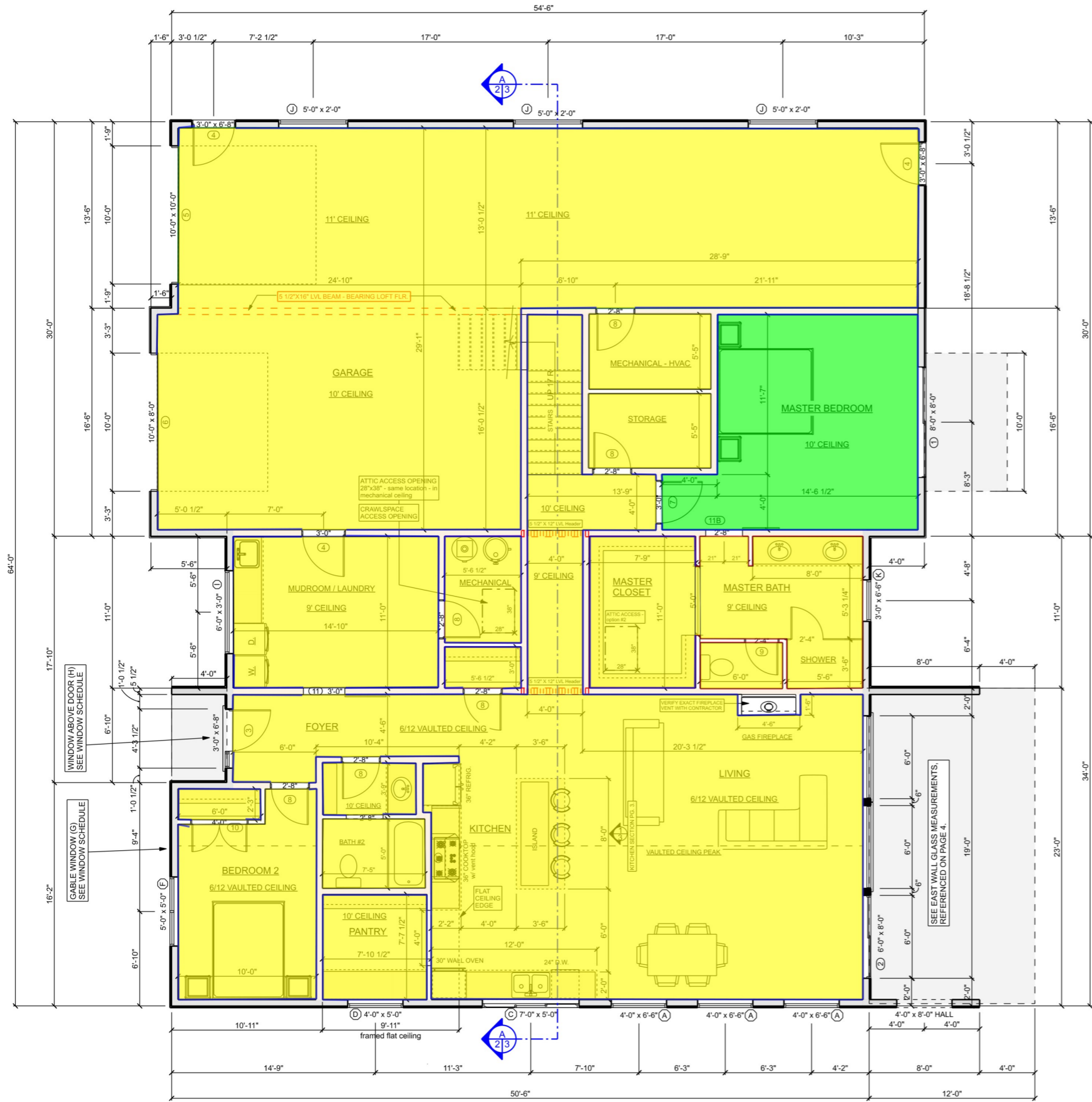


Building Data Summary	
Project ID:	Bitney Residence
Location:	
Scope of Work:	Painting
Date:	

Item #	Ref. Sheet #	Item Description	Unit	Quantity	Wastage	Quantity w/ Wastage	Unit Material Cost	Total Material Cost	Unit Manhour	Hourly Wage	Unit Labor Cost	Total Labor Cost	Sub Cost	Total Trade Cost
DIVISION.01 GENERAL REQUIREMENTS														
1		Supervision and Coordination	LS											
2		Submittals and Shop drawings	LS											
3		Final Cleaning	LS											
4		Mobilization Costs	LS											
5		Temporary Control & Facilities	LS											
6		Mobile Scaffolding	SF	3200	0%	3200	\$ -	\$ -	0.000	\$ -	\$ -	\$ -	\$ -	
Subtotal (General Requirements)													\$ -	

DIVISION 09- FINISHES														
Painting														
Ceiling														
7		Lime Wash on Ceiling	SF	241.52	5%	254	\$ -	\$ -	0.000	\$ -	\$ -	\$ -	\$ -	
8		Shoji White on Ceiling	SF	3623.87	5%	3805	\$ -	\$ -	0.000	\$ -	\$ -	\$ -	\$ -	
Walls														
9		Shoji White On Wall	SF	9569	5%	10047	\$ -	\$ -	0.000	\$ -	\$ -	\$ -	\$ -	
10		Lime Wash On Wall	SF	1546	5%	1624	\$ -	\$ -	0.000	\$ -	\$ -	\$ -	\$ -	
Opening & Misc.														
11		Shoji White Paint on Door Trim	LF	199	5%	209	\$ -	\$ -	0.000	\$ -	\$ -	\$ -	\$ -	
12		Shoji White Paint on Doors	EA	6	0%	6	\$ -	\$ -	0.000	\$ -	\$ -	\$ -	\$ -	
13		Shoji White Paint on Wall Base	LF	812	5%	852	\$ -	\$ -	0.000	\$ -	\$ -	\$ -	\$ -	
Exterior														
14		SW Urbanes Bronze Paint on 8" Wide Soffit	LF	343	5%	360	\$ -	\$ -	0.000	\$ -	\$ -	\$ -	\$ -	
15		SW Urbanes Bronze on Fascia	LF	343	5%	360	\$ -	\$ -	0.000	\$ -	\$ -	\$ -	\$ -	
16		Shoji White Paint on Board & Batten	SF	2011	5%	2111	\$ -	\$ -	0.000	\$ -	\$ -	\$ -	\$ -	
17		SW Black Paint on Horizontal Siding	SF	964	5%	1012	\$ -	\$ -	0.000	\$ -	\$ -	\$ -	\$ -	
Subtotal (Finishes)													\$ -	

													PROJECTED COST	\$ -	
													INSURANCE	3%	\$ -
													CONTINGENCY	5%	\$ -
													OVERHEAD AND PROFIT	15%	\$ -
													TAX	0.00%	\$ -
													SUGGESTED BID	\$ -	



MAIN FLOOR PLAN
SCALE: 1/4" = 1'-0"

TOTAL LIVING 3,000 Sq. Ft.

MAIN FLOOR: 2,129 Sq. Ft.
LOFT: 871 Sq. Ft.
GARAGE: 1,168 Sq. Ft.
PATIO: 361 Sq. Ft.

- 2X6 EXTERIOR BEARING WALL. STUD FRAMING @ 16" O.C.
- 2X6 INTERIOR WALL. STUD FRAMING @ 16" O.C.
- 2X4 INTERIOR WALL. STUD FRAMING @ 16" O.C.

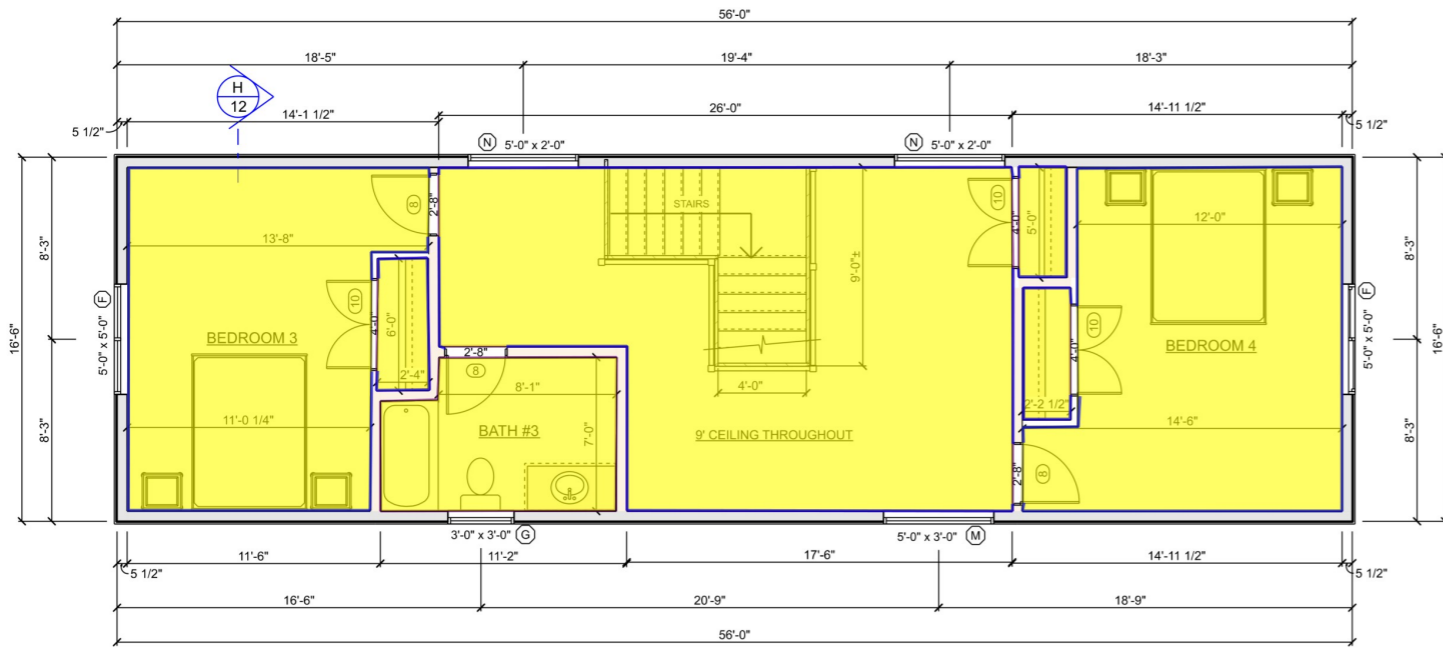
- INTERIOR STAIRWAY SECTION ON PAGE #3
- #1 INTERIOR KITCHEN SECTION VIEW, PAGE #3.

MAIN FLOOR WINDOW SCHEDULE									
OPENING ID	WINDOWS	WIDTH	HEIGHT	ELEVATION	TOP OF OPENING	HEADER	JAMB SIZE	COUNT	EGRESS
A	Window/Fixed	4'-0"	6'-6"		8'-0"	(2) 2x8	6 9/16"	3	No
C	Window/Slider	7'-0"	5'-0"		8'-0"	(2) 2x8	6 9/16"	1	No
D	Window/Fixed	4'-0"	5'-0"		8'-0"	(2) 2x8	6 9/16"	1	No
F	Window/Casement	5'-0"	5'-0"		6'-8"	(2) 2x8	6 9/16"	1	Yes
G	Window/Fixed	3'-0"	3'-0"		14'-0"	(2) 2x8	6 9/16"	1	No
H	Window/Fixed	4'-4"	1'-10"		9'-6"	(2) 2x8	6 9/16"	1	No
I	Window/Fixed	6'-0"	3'-0"		6'-8"	(2) 2x8	6 9/16"	1	No
J	Window/Fixed	5'-0"	2'-0"		10'-0"	(2) 2x8	6 9/16"	3	No
K	Window/Fixed	3'-0"	6'-6"		8'-0"	(2) 2x8	6 9/16"	1	No

MAIN FLOOR DOOR SCHEDULE							
OPENING ID	EXTERIOR DOORS	WIDTH	HEIGHT	HEADER	JAMB SIZE	EGRESS	COUNT
1	Exterior Door/Patio	8'-0"	8'-0"	(2) 2x10	6 9/16"	Yes	1
2	Exterior Door/Tall Sliding	6'-0"	8'-0"	(2) 2x10	6 9/16"	Yes	1
3	3' Entry Door w/ 14" sidelite	4'-3"	6'-8"	(2) 2x10	6 9/16"	Yes	1
4	Entry Door	3'-0"	6'-8"	(2) 2x10	6 9/16"	Yes	3
5	Garage Door	10'-0"	10'-0"	(3) 2x10	NA	Yes	1
6	Garage Door	10'-0"	8'-0"	(3) 2x10	NA	Yes	1
INTERIOR DOORS							
7	Interior Door	3'-0"	6'-8"	(2) 2x6	6 9/16"	No	1
8	Interior Door	2'-8"	6'-8"	(2) 2x6	6 9/16"	No	6
9	Interior Door	2'-4"	6'-8"	(2) 2x6	4 9/16"	No	1
10	Interior Door/Double	4'-0"	6'-8"	(2) 2x6	4 9/16"	No	1
11	Interior Door/Barn Door	3'-0"	6'-8"	(2) 2x6	NA	No	1
11 B	Interior Door/Barn Door	2'-8"	6'-8"	(2) 2x6	NA	No	1

- Shoji White On Wall 11'H **108.7 FT**
- Shoji White On Wall 10'H **438.0 FT**
- Shoji White On Wall 14'H **51.5 FT**
- Shoji White On Wall 9'H **67.1 FT**
- Lime Wash On Wall 10'H **68.1 FT**
- Lime Wash On Wall 9'H **96.2 FT**
- Lime Wash on Ceiling **241.5 SQ FT**
- Shoji White on Ceiling **2801.6 SQ FT**
- Paint On Wall Base **601.9 FT**





LOFT WINDOW SCHEDULE								
OPENING ID	WINDOWS	WIDTH	HEIGHT	ELEVATION	HEADER	JAMB SIZE	COUNT	EGRESS
F	Window/Casement	5'-0"	5'-0"		(2) 2x8	6 9/16"	2	Yes
G	Window/Fixed	3'-0"	3'-0"		(2) 2x8	6 9/16"	1	No
M	Window/Fixed	5'-0"	3'-0"		(2) 2x8	6 9/16"	1	No
N	Window/Fixed	5'-0"	2'-0"		(2) 2x8	6 9/16"	2	No

GARAGE LOFT PLAN: 871 Sq. Ft.
SCALE: 1/4" = 1'-0"

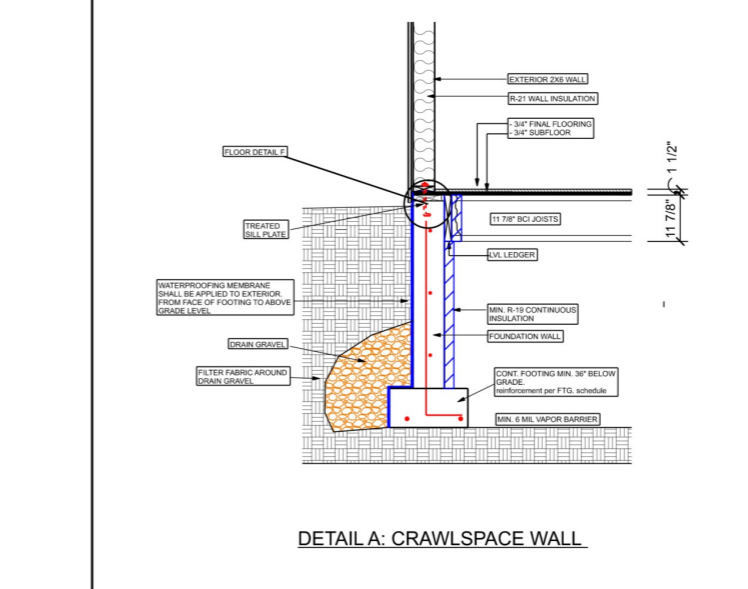
- LOFT RAILING - MIN. 36" TOP CLEARANCE FOR HANDRAILS . RAILING SPINDLES. MAX. 4" O.C.
- STAIRWAY HANDRAILS INSTALLED @ 36" HEIGHT.

- 2X6 EXTERIOR BEARING WALL. STUD FRAMING @ 16" O.C.
- 2X6 INTERIOR WALL. STUD FRAMING @ 16" O.C.
- 2X4 INTERIOR WALL. STUD FRAMING @ 16" O.C.

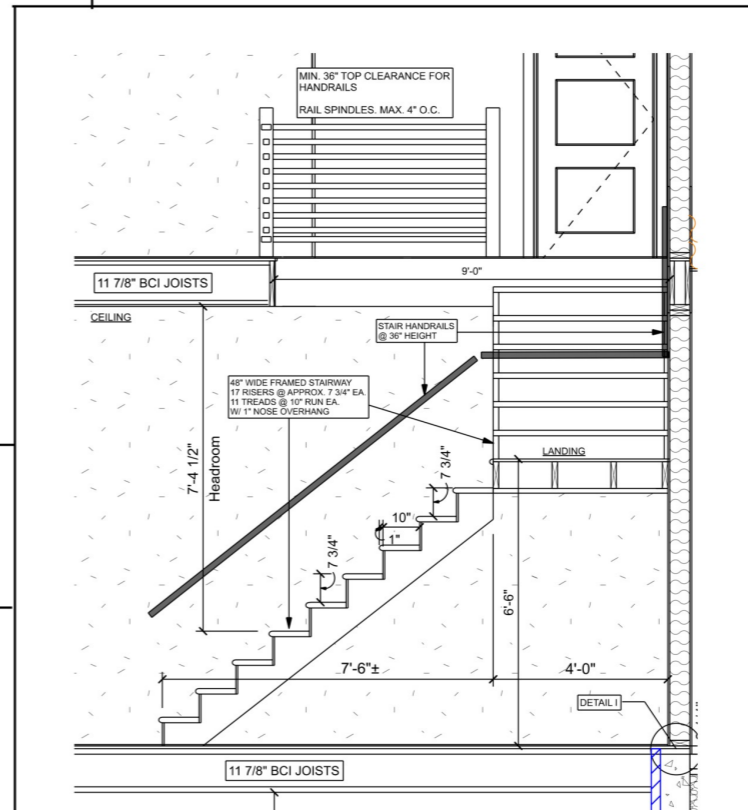
LOFT DOOR SCHEDULE							
OPENING ID	DOORS	WIDTH	HEIGHT	HEADER	JAMB SIZE	EGRESS	COUNT
8	Interior Door	2'-8"	6'-8"	(2) 2x6	6 9/16"	No	2
10	Interior Door	4'-0"	6'-8"	(2) 2x6	4 9/16"	No	2



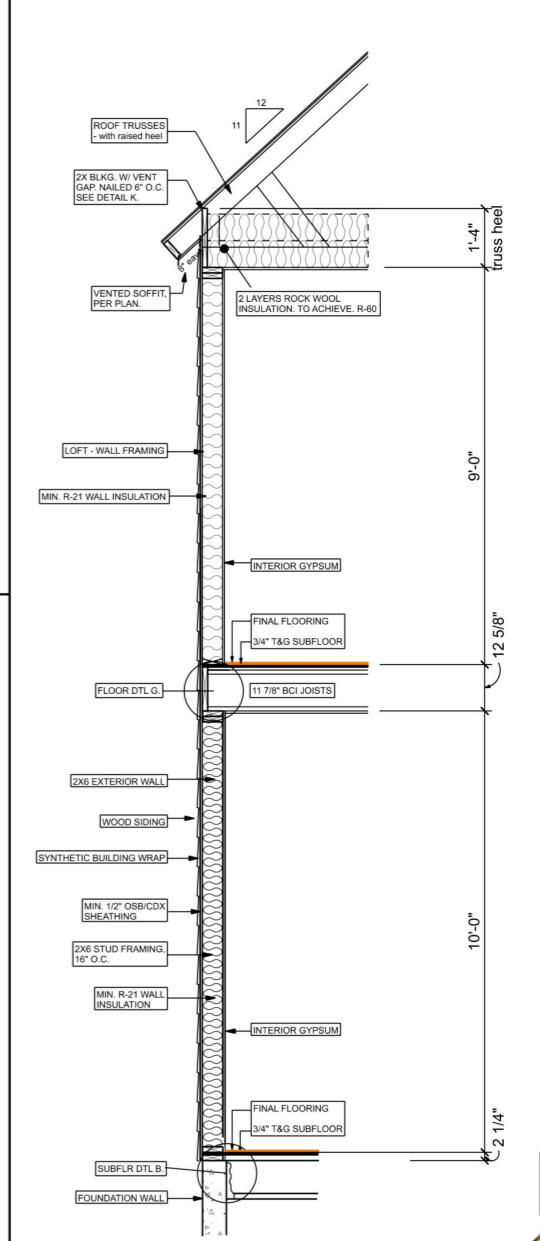
INTERIOR KITCHEN SECTION
SCALE: 1/2" = 1'-0"



DETAIL A: CRAWLSPACE WALL



INTERIOR STAIR SECTION
SCALE: 1/2" = 1'-0"



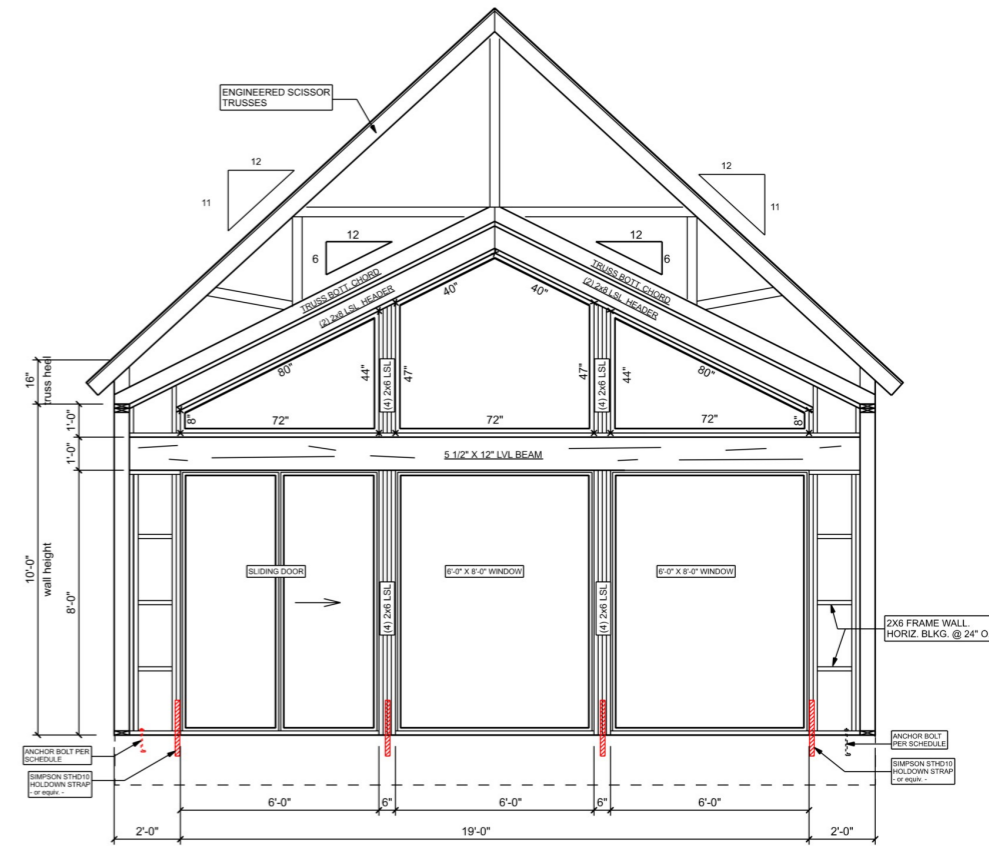
TYP. WALL FRAMING SECTION

- 2'-8"x6'-8" Door Paint 3.0 EA
- 4'-0"x6'-8" Door Paint 3.0 EA
- Shoji White On Wall 9'H 165.1 FT
- Shoji White On Wall 10'H 118.2 FT
- Shoji White on Ceiling 822.2 SQ FT
- Paint On Wall Base 210.0 FT

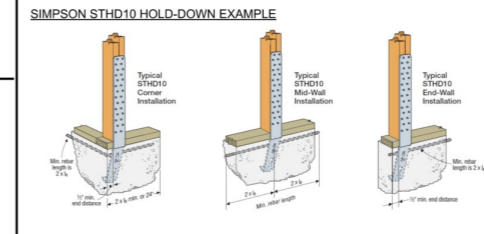




EAST ELEVATION
SCALE: 1/4" = 1'-0"



EAST WALL WINDOW SECTION

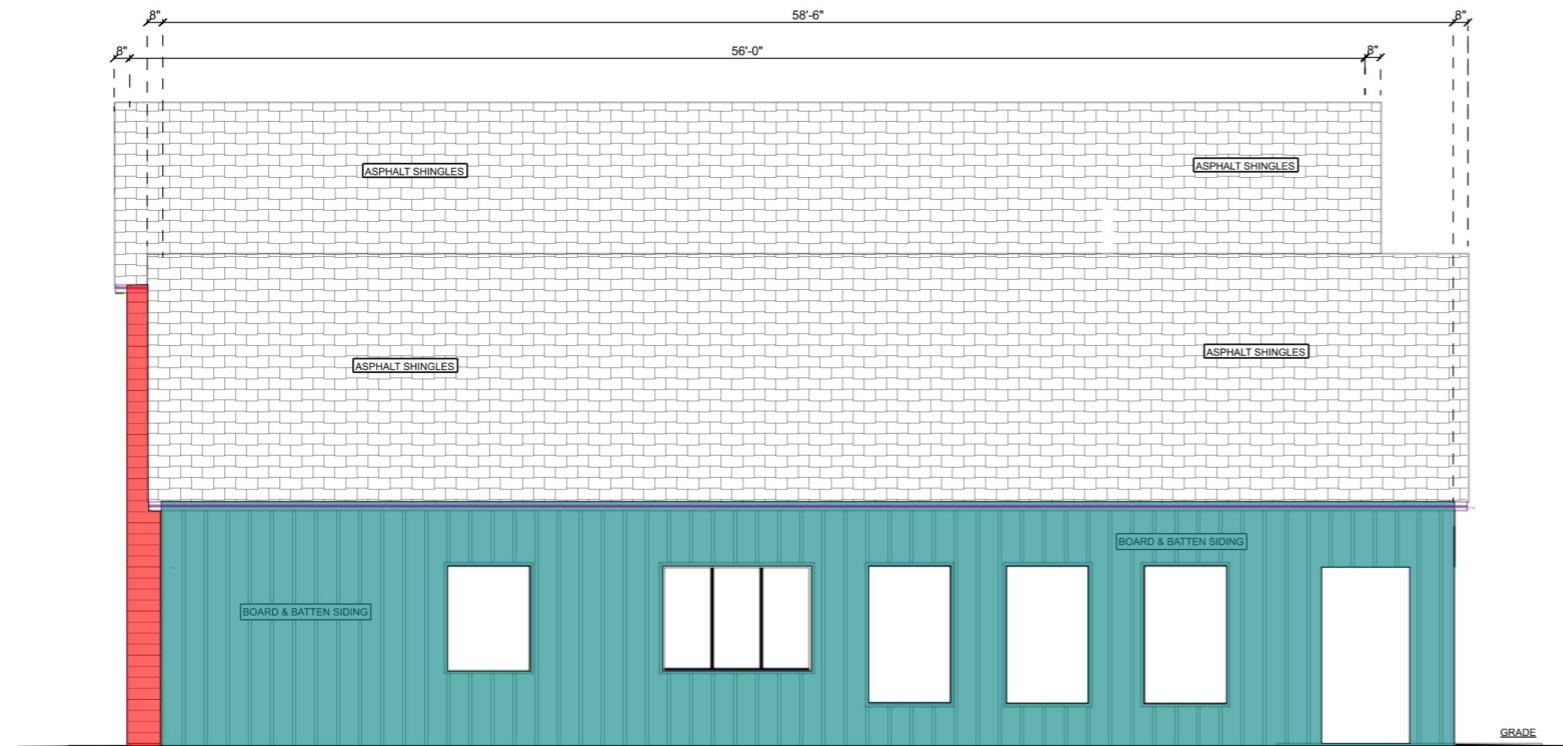


THESE ARE APPROXIMATE WINDOW MEASUREMENTS AND ARE FOR BIDDING PURPOSES ONLY. IT IS RECOMMENDED TO COLLECT EXACT MEASUREMENTS TO ORDER AFTER STRUCTURE HAS BEEN ERRECTED ON-SITE.

- SW Urbanes Bronze (8" Wide Soffit...) 162.7 SQ FT
- Board & Batten (Shoji White) 691.7 SQ FT
- SW Black 634.0 SQ FT

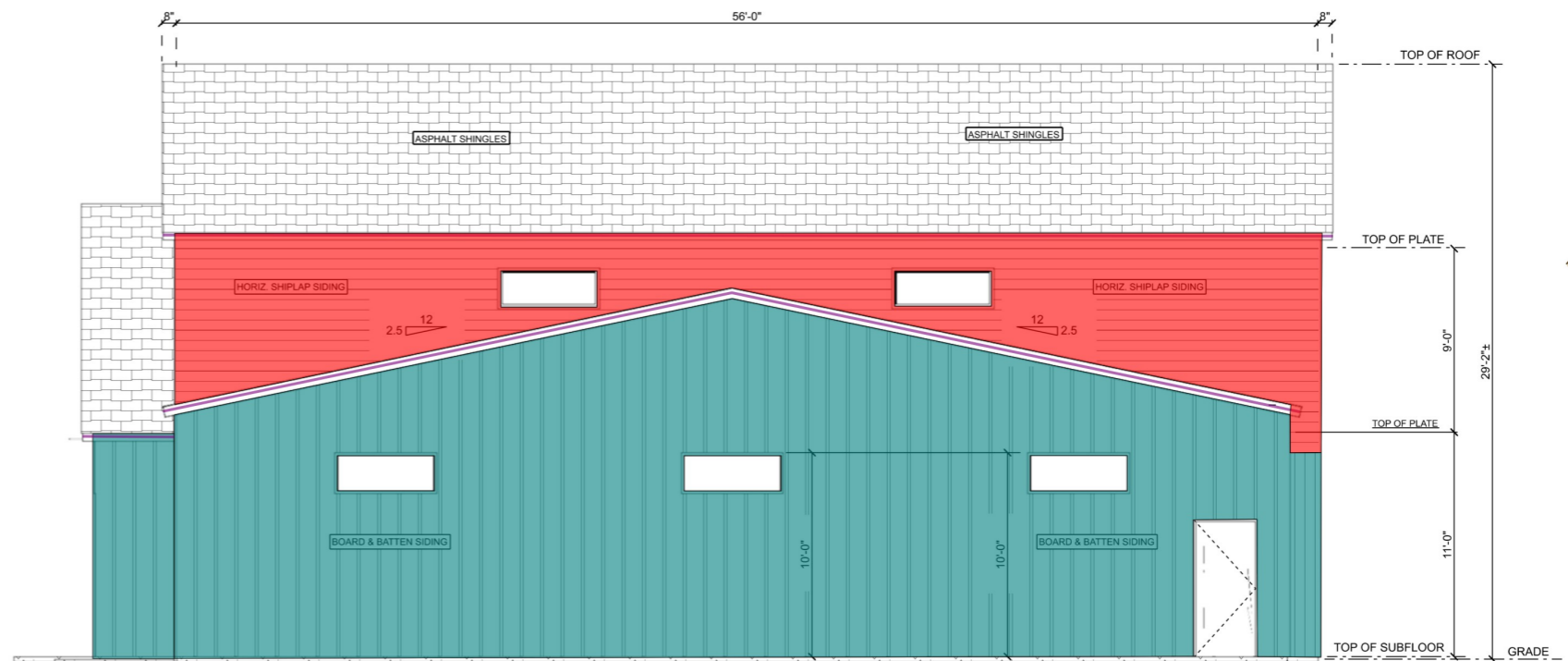


WEST ELEVATION
SCALE: 1/4" = 1'-0"



SOUTH ELEVATION
SCALE: 1/4" = 1'-0"

- Board & Batten (Shoji White) **1319.0 SQ FT**
- SW Urbanes Bronze (8" Wide ... **180.2 FT**
- SW Black **330.0 SQ FT**



NORTH ELEVATION
SCALE: 1/4" = 1'-0"

